

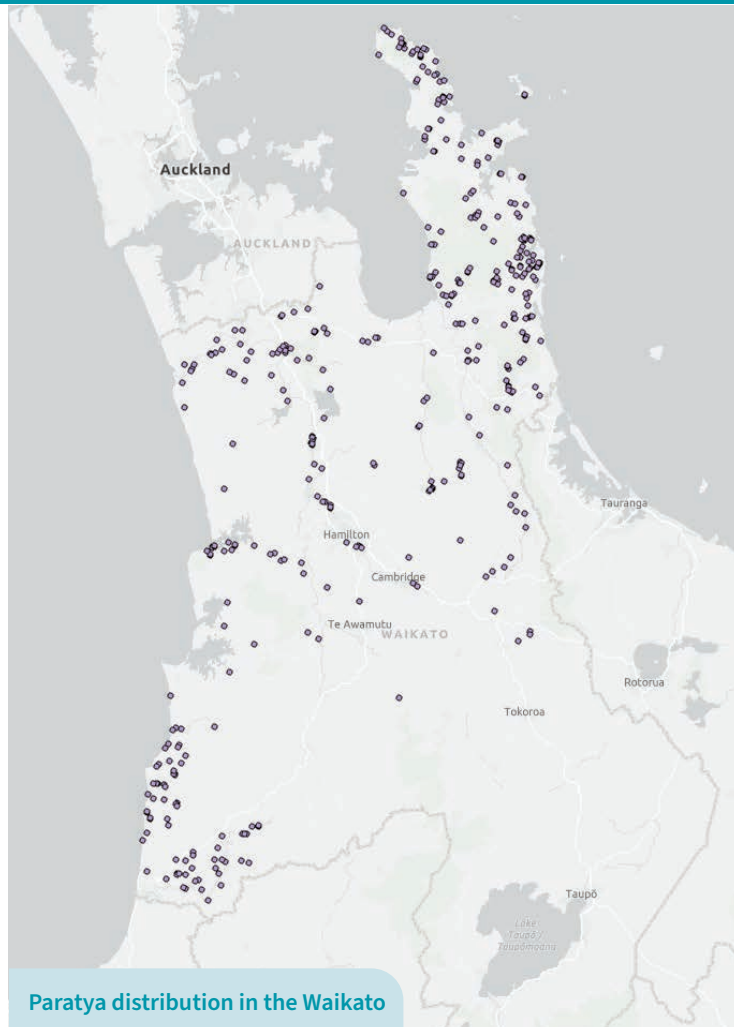
Paratya/kōuraura

Paratya curvirostris

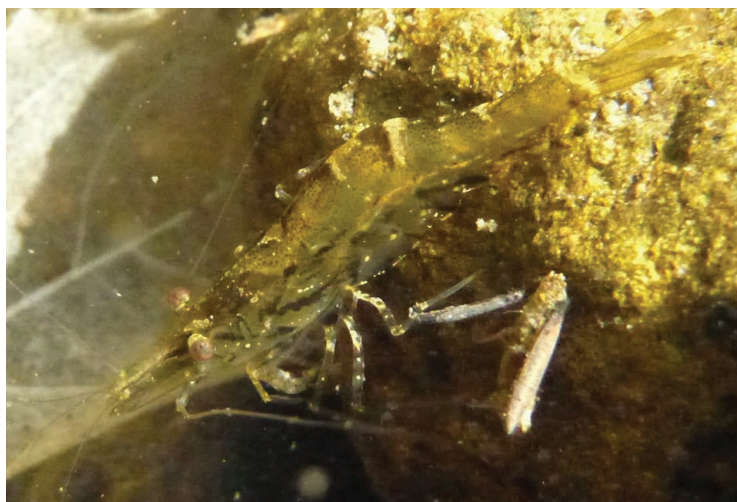
Native

Paratya is New Zealand's only freshwater shrimp that is widespread nationally and in the Waikato region. They seek shelter in weeds and other aquatic vegetation in slow moving water and are more commonly found in coastal streams as they have a marine stage in their life cycle.

These invertebrates are almost transparent and are able to hover in the water by beating their appendages under their abdomen. Paratya feed constantly on various items including fine organic matter, shredded plant matter and occasionally they will eat other small invertebrates. Paratya are also very good climbers.



Paratya distribution in the Waikato



He taiao mauriora ▲ **Healthy environment**

He hāpori hihiri ▲ **Vibrant communities**

He ōhanga pakari ▲ **Strong economy**

For more information call 0800 800 401
or visit waikatoregion.govt.nz

7704 - January 2025